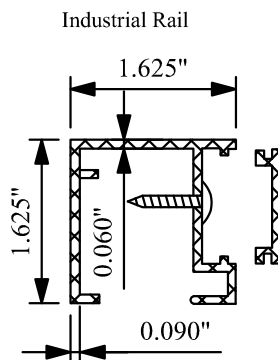


"A" Heights	"B"	Post	Wall
36 inch	2 1/2"	Sq. Tube x 0.080"	
42 inch	2 1/2"	Sq. Tube x 0.125"	
48 inch	3"	Sq. Tube x 0.125"	
54 inch	4"	Sq. Tube x 0.125"	
60 inch			
72 inch			



NOTES:

1. INSTALLATION TO BE COMPLETED IN ACCORDANCE WITH MANUFACTURERS SPEC.
2. DO NOT SCALE DRAWINGS
3. SPECIFICATIONS SHOWN CAN BE CHANGED ONLY BY THE MANUFACTURER.
4. FOOTING WIDTH: (4) X POST WIDTH
FOOTING DEPTH : MIN. 24"/REC. FREEZE LINE
5. PANELS SHOWN WITH MORTISED POST SYSTEMS.
6. PANELS ARE RACKABLE WHICH MAY CHANGE FACE-TO-FACE DIMENSION

MAVERICK ULTRA II™ INDUSTRIAL

Panel width 8' Aberdeen Flush Bottom 3 Rail Standard