



## MAVERICK ULTRA

Residential, Commercial & Industrial **Aluminum** Fencing Solutions



Iron World Manufacturing, LLC, 9390 Davis Avenue, Howard County, Maryland 20723

Phone: 301-776-7448 | Toll Free: 866-310-2747 | Fax: 301-776-7677

[ironworldfencing.com](http://ironworldfencing.com)



# MAVERICK ULTRA

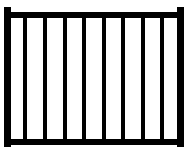
## Residential Grade Aluminum Fence

Maverick Ultra residential grade aluminum fencing offers a classic look of a narrow picket. This grade of aluminum fencing offers a great look and durability for residential pools, backyards and as a decorative perimeter fence. Maverick Ultra aluminum fencing is finished with super durable AAMA 2604 architectural grade powder coat and is warranted against rust, peel, chip, or crack, as long as you own your fence.



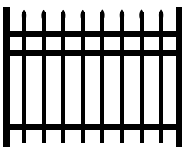
### RESIDENTIAL ALUMINUM STYLES

Aberdeen



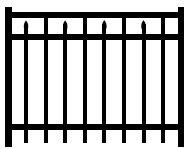
2 Rail Pool

Barcelona

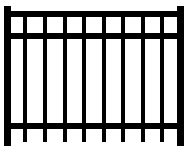


3 Rail

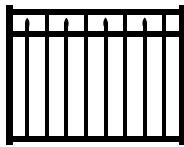
Camden



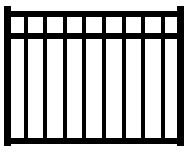
3 Rail



3 Rail



3 Rail Pool



3 Rail Pool

### POSTS

2" x 2"

2" x 2"

2" x 2"

2 - 1/2" x 2 - 1/2"

2 - 1/2" x 2 - 1/2"

.062 wall

.080 wall

.125 wall

.080 wall

.125 wall

### RAILS

1"x1" Rail

.080 wall

### PICKET SIZE

5/8" x 5/8"

.045 wall

### PICKET SPACING

3-13/16"

### PANEL WIDTHS

6' (70-1/2") wide only

### PANEL OPTIONS



Fleur-de-lis



Triad

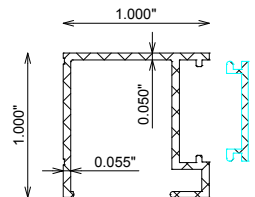
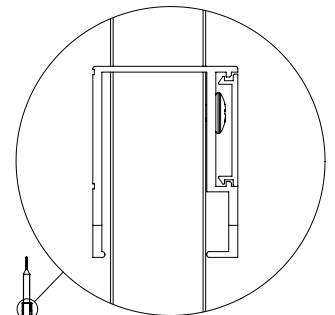


Ball



Rings

### PANEL CHANNEL

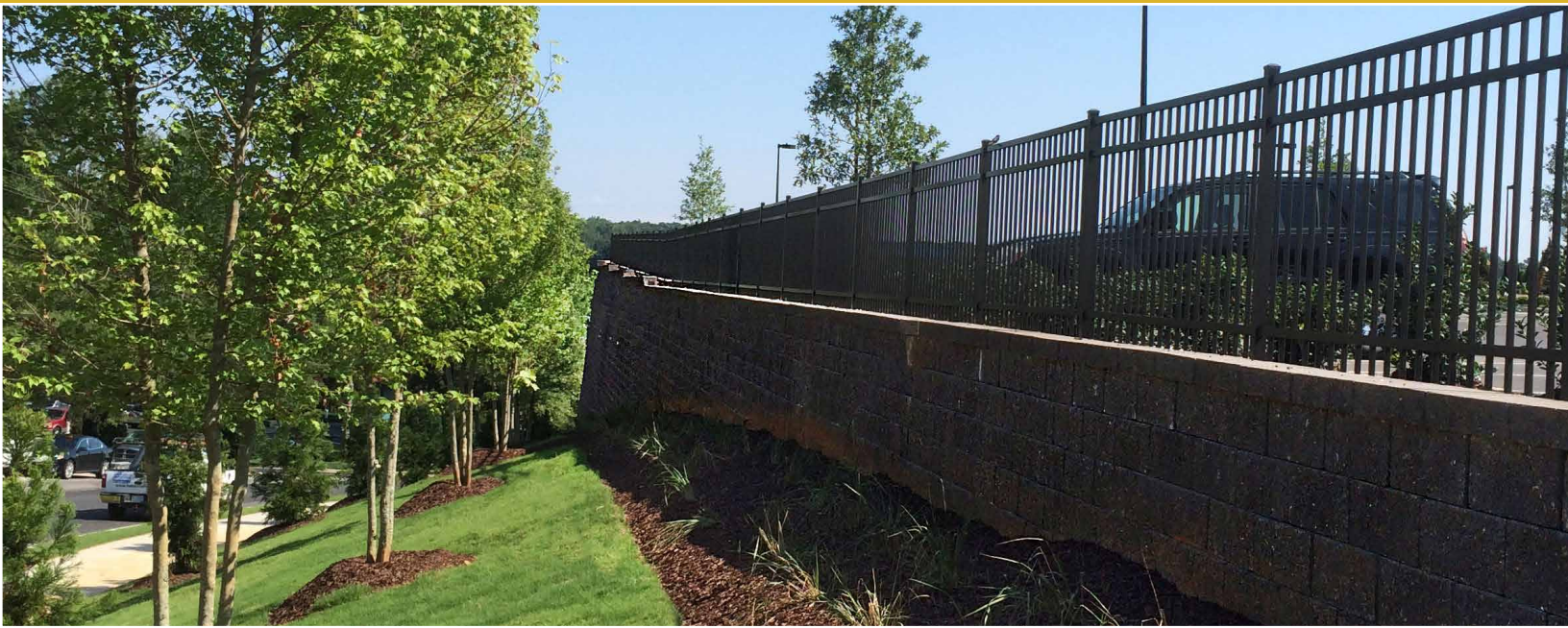




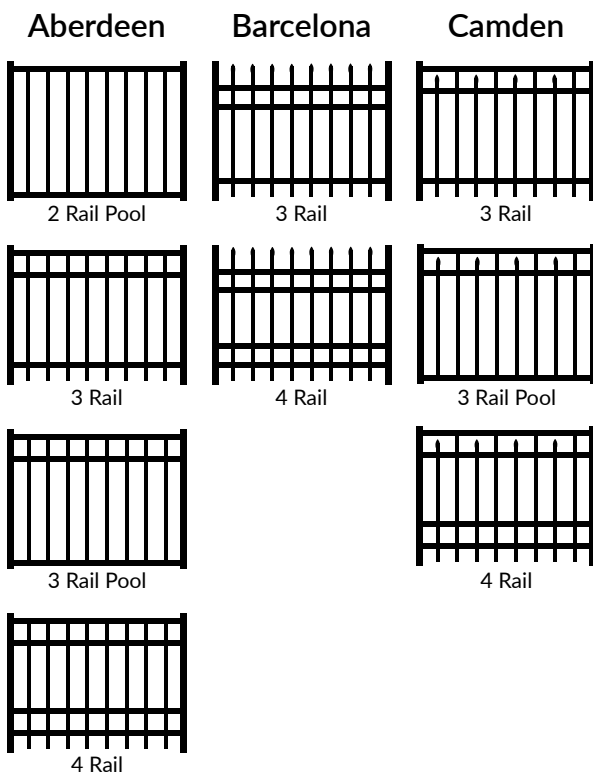
# MAVERICK ULTRA PLUS

## Commercial Grade Aluminum Fence

Maverick Ultra Plus aluminum fencing is offered in commercial, high-end residential, and perimeter security fencing options. Maverick Ultra Plus works great for commercial pools, estate fencing, golf courses and cemeteries. Maverick Ultra Plus aluminum fencing is finished with super durable AAMA 2604 architectural grade powder coat and is warranted against rust, peel, chip, or crack, as long as you own your fence.



### COMMERCIAL ALUMINUM STYLES



### POSTS

2" x 2"	.062 wall
2" x 2"	.080 wall
2" x 2"	.125 wall
2-1/2" x 2-1/2"	.080 wall
2-1/2" x 2-1/2"	.125 wall
3" x 3"	.125 wall

### RAILS

1-1/2" x 1-1/8"	.080 wall
-----------------	-----------

### PICKET SIZE

3/4" x 3/4"	.050 wall
-------------	-----------

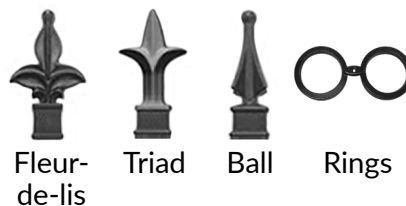
### PICKET SPACING

3-13/16"

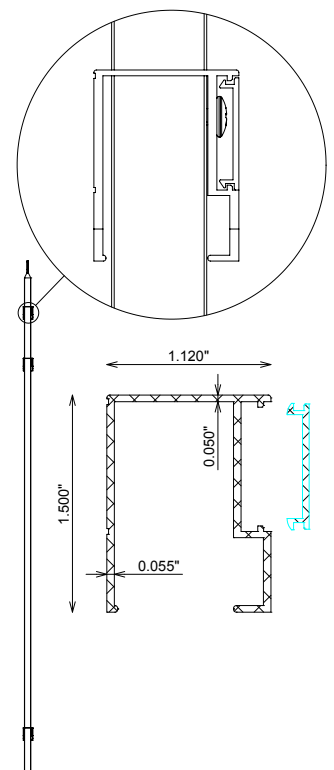
### PANEL WIDTHS

6' (70-1/2") and 8' (93")

### PANEL OPTIONS



### PANEL CHANNEL





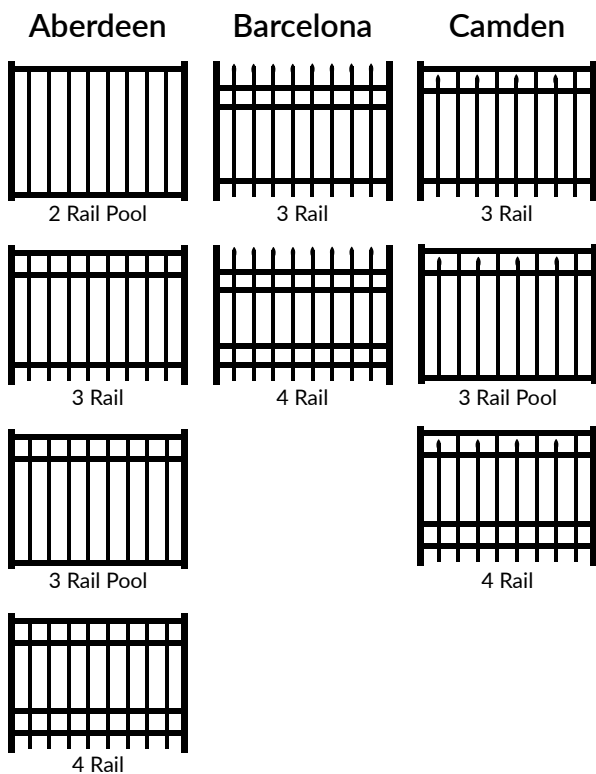
# MAVERICK ULTRA II

## Industrial Grade Aluminum Fence

Maverick Ultra II industrial grade aluminum fencing is Iron World's strongest, most durable aluminum fence offered. With Iron World's "Heavy" horizontal rails and 1" square pickets this fence will stand the test of time. Maverick Ultra II is the choice for large residential properties, public facilities, storage & commercial properties and security fencing for any commercial / Industrial properties. Maverick Ultra II aluminum fencing is finished with super durable AAMA 2604 architectural grade powder coat and is warranted against rust, peel, chip, or crack, as long as you own your fence.



### INDUSTRIAL ALUMINUM STYLES



### POSTS

2-1/2" x 2-1/2"	.080 wall
2-1/2" x 2-1/2"	.125 wall
3" x 3"	.125 wall
4" x 4" (blank)	.125 wall

### RAILS

1-5/8" x 1-5/8"	.100 wall
-----------------	-----------

### PICKET SIZE

1" x 1"	.062 wall
---------	-----------

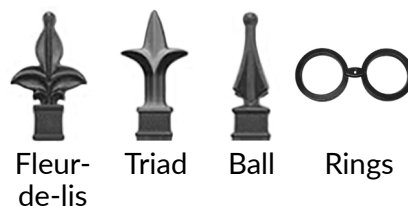
### PICKET SPACING

3-15/16"

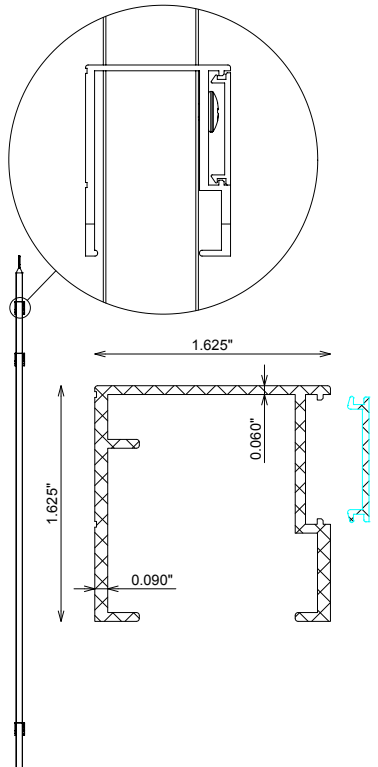
### PANEL WIDTHS

6' (68-1/2") and 8' (93-1/2")

### PANEL OPTIONS



### PANEL CHANNEL

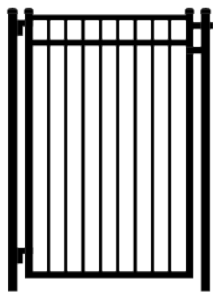


# ALUMINUM SWING GATES

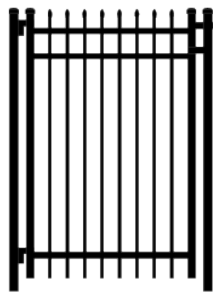
Iron World™ offers a complete line of swing gates (walk and double drive) that offer privacy and security in a multitude of styles. Designed to complement any setting and enhance both commercial and residential properties, Iron World™ swing gates are custom made to precisely fit your opening. All aluminum swing gates can be made using our residential, commercial, or industrial materials. Swing gates can range in size from 3 foot single gates to 40 foot double gates. We offer all styles with rings, finials, and arches.



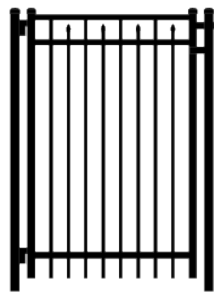
## FLAT TOP WALK GATES



Aberdeen

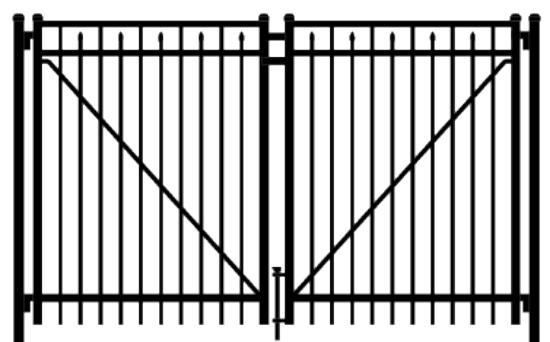


Barcelona

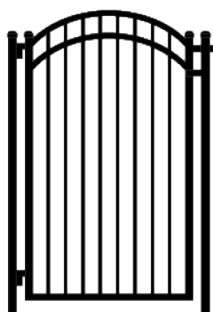


Camden

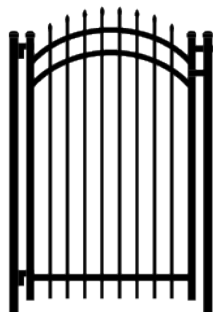
## FLAT TOP DRIVE GATES



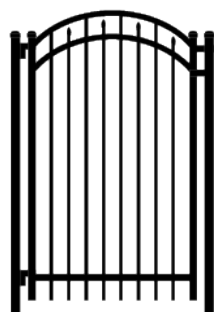
## ARCHED TOP WALK GATES



Aberdeen

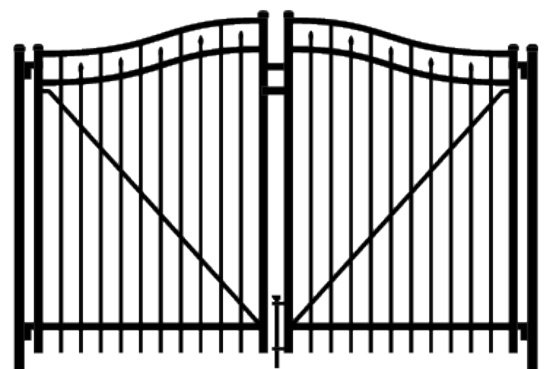


Barcelona



Camden

## ARCHED TOP DRIVE GATES

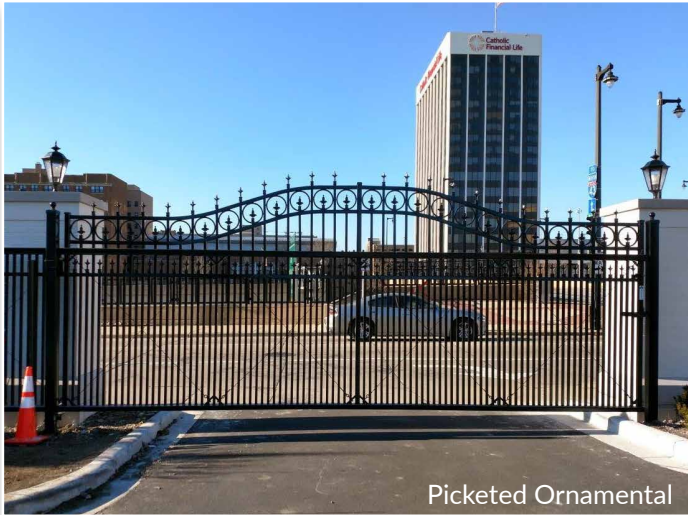




# GOLDEN GATE

## Slide Gates

Iron World Fencing prides itself on producing the BEST slide gates in the industry. With our Golden Gate Series, you get the most up-to-date construction features backed by Iron World's quality reputation for craftsmanship, competitive pricing, short lead times and reasonable shipping. Slide Gates are available in aluminum chain link slider or ornamental powder coated slider. Features include a closed track system with lubricated eight bearing rollers to protect from the elements and guarantee smooth opening and closing.



Picketed Ornamental



Aluminum Slide Gates



Aluminum Chain Link



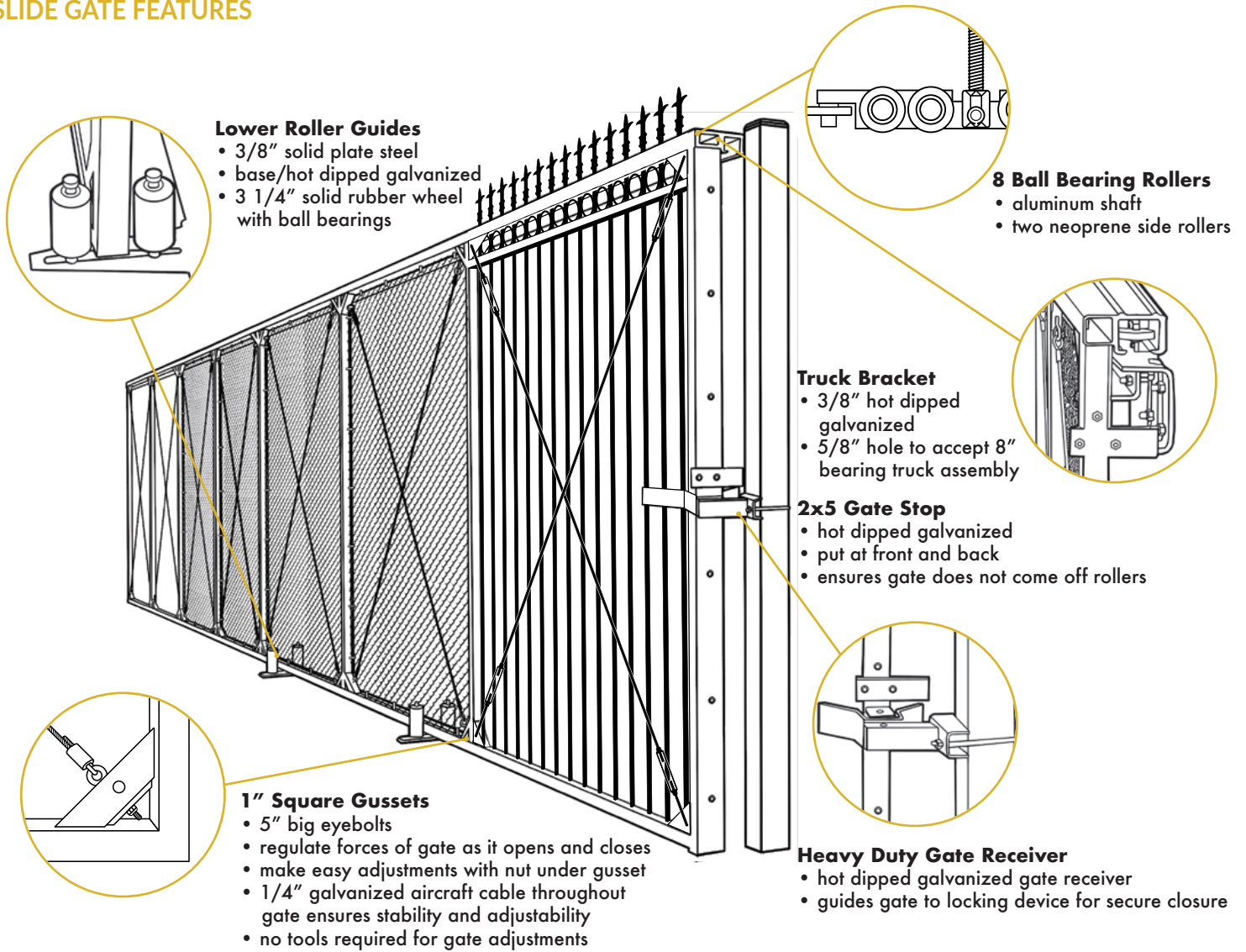
Custom Design & Colors

### SPECIFICATIONS

- Available in aluminum chain link slider or ornamental powder coated slider
- Features closed track system with lubricated eight bearing rollers to protect from the elements and guarantee smooth opening and closing
- Made from T-6063 aluminum and wired in aluminized fabric or picketed for ornamental projects
- Custom made to fit your needs: arches, rings, finials, etc.
- Made with safety in mind – Automated gate package which meets UL 325 compliance available
- Comes with welded gussets and 1/4 air craft cables for easy adjustment to guarantee smooth operation



## SLIDE GATE FEATURES





## Panel and Gate Hardware



TruClose® Hinge  
Heavy Duty



TruClose® Hinge  
Regular



Estate Hinge



LokkLatch®  
Deluxe



LokkLatch®  
Regular



LokkLatch®  
Magnetic Keyed



Gravity Latch



MagnaLatch®  
Vertical Pull 10"



MagnaLatch®  
Vertical Pull 20"



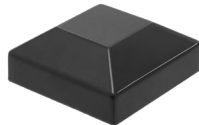
Aluminum Drop Rod



Flat Bracket



Swivel Bracket



Post Cap



Picket Plug



Fleur de Lis



Triad



Ball



Rings



# Iron World Fencing

Iron World Fencing is a family owned and operated business established in 2006 in Howard County, Maryland. Today, Iron World Manufacturing has grown into an industry leader in manufacturing ornamental steel and aluminum fence systems, gates and polyester coated pipe. Iron World is proud and grateful to have over 100 dedicated employees that take pride in manufacturing quality American made products.

Iron World Manufacturing is one of the fastest growing manufactures of Ornamental Fencing in the Country. With pride we stand behind and offer warranties on all of our products. Our world class fence systems, gates and polyester coated pipe meet the highest standards of quality, durability and functionality. All of the products we offer are manufactured in the U.S.A. and offer beauty, strength and security.



Our mission is to provide superior products and service to all of our Residential, Commercial and Industrial customers at a competitive price. Iron World Manufacturing strives to be at the forefront of ornamental fence manufacturing and powder coating technology. Our commitment to customer service is never sacrificed as we treat each and every customer as a valued partner.



Call Iron World Manufacturing today to speak with our knowledgeable sales representatives.  
**(866)310-2747**

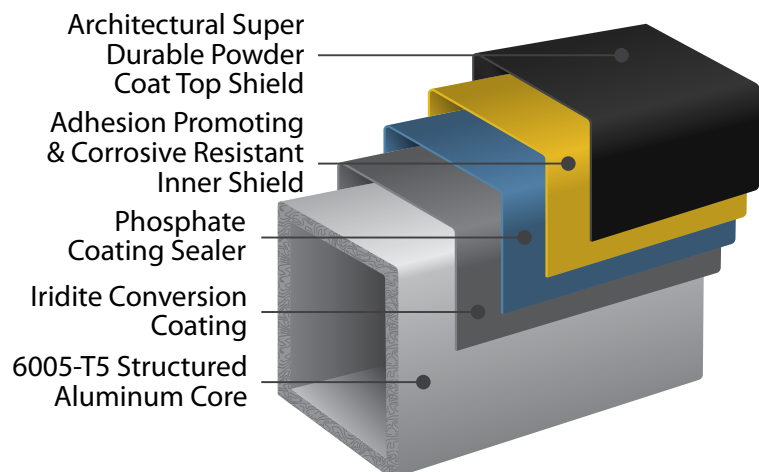


# Specifications

Components	Maverick Ultra	Maverick Ultra Plus	Maverick Ultra II
Pickets (Size and Wall Thickness)	5/8sq x .045	3/4sq x .050	1"sq x .062
Rails: Side Walls	1.00" x 1.00" Triple .080	1.50" x 1.20" Triple .080	1-5/8" x 1-5/8" Triple .100
Pickets 6' Wide Sections	15	14	13
Pickets 8' Wide Sections	N/A	19	18
Post Standards	2" x 2" x .062 2" x 2" x .080	2" x 2" x .080 2 1/2" x 2 1/2" x .080 2 1/2" x 2 1/2" x .125 3" x 3" x .125	2 1/2" x 2 1/2" x .080 2 1/2" x 2 1/2" x .125 3" x 3" x .125
Post Gate	2" x 2" x .125 2 1/2" x 2 1/2" x .125 3" x 3" x .125 4" x 4" x .125	2" x 2" x .125 2 1/2" x 2 1/2" x .125 3" x 3" x .125 4" x 4" x .125	2 1/2" x 2 1/2" x .125 3" x 3" x .125 4" x 4" x .125
Picket Spacing	<4" TYP.	<4" TYP.	<4" TYP.
Standard Heights	36", 42", 48", 54", 60", 72"	36", 42", 48", 54", 60", 72"	36", 42", 48", 54", 60", 72", 84", 96"
Alloy	6063/T5 alloy on pickets, posts, and rails. 6005/T5 alloy available on posts.	6063/T5 alloy on pickets, posts, and rails. 6005/T5 alloy available on posts.	6063/T5 alloy on pickets, posts, and rails. 6005/T5 alloy available on posts.



## IRON SHIELD





## Process



Iron World powder coats all pickets, channels and posts loose rather than assembled to ensure 100 percent powder coating coverage of all parts.



We package all panels, posts, and gates on skids with vinyl clips in between each panel to ensure no scratching. Then we wrap and heat shrink it to ensure your product gets to you damage free.

## Lifetime Limited Warranty

Iron World Mfg. warrants to the original owner that all of our products will be free of manufacturing and material defects. Our powder coating finish on our aluminum fences will not peel, crack, chip, or blister for as long as you own the fence.

This warranty does not cover damages caused by improper use, application, or installation; abuse; alterations; negligence; vandalism; or acts of God. The warranty also does not extend to the normal weathering, slight discoloration, or chalking caused by prolonged exposure to the elements, mildew, or air pollution. There is no other express warranty except that stated herein.

This lifetime warranty is intended to cover original owners only and is not transferable. The original owner is covered by the warranty for as long as he owns and resides in the property on which the product was first installed. In the event of commercial or otherwise non-residential use, Iron World limits this product warranty to 20 years with a starting date of the original day of installation.

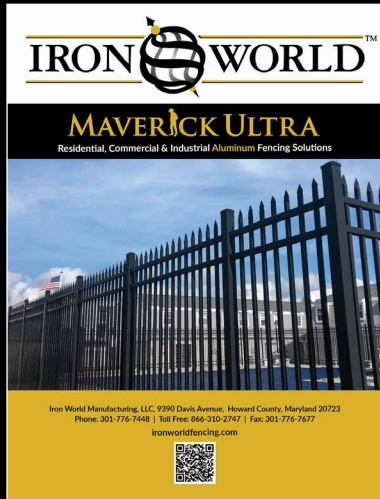
In case of a warranty claim, the owner must provide Iron World a written notice specifying the nature of the defect, along with proof of purchase, within 20 days of the failure. Iron World reserves the right to inspect the material in question to determine the validity of the claim. Defective material must be shipped to Iron World's facility for inspection freight pre-paid. If the product fails to conform to this warranty, Iron World will replace or repair the defective material at its discretion. Iron World shall not be liable or responsible for labor charges or other expenses whatsoever in connection with removal or installation of either the original or replacement product.

The above constitutes the complete limited lifetime warranty by Iron World and no other agreement, written or implied, is valid. No person is authorized to change or modify this warranty. Recoveries for consequential or incidental damages are hereby excluded.

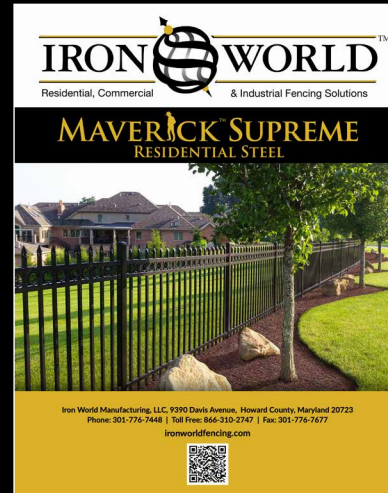
Iron World Management



# Iron World Manufacturing Family of Products



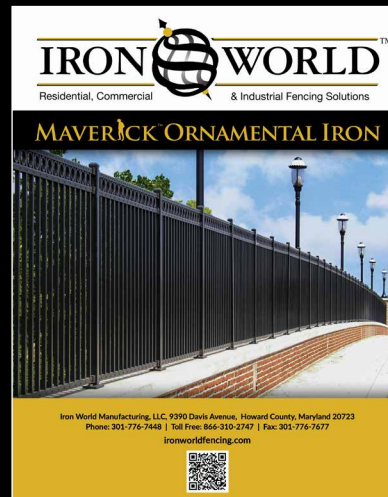
Maverick Ultra Aluminum fencing panels and gates are manufactured in three grades for residential, commercial, and industrial applications.



Maverick Supreme is targeted for residential applications and provides the beauty and security of stainless steel raked panels with a hidden fastener system.



Maverick Supreme Plus is targeted for commercial applications and provides the beauty and security of stainless steel raked panels with a hidden fastener system.



Maverick Ornamental Iron is our premier iron product utilizing an 11 gauge channel and both 3/4 and 1 inch steel pickets. Pickets are available in 14, 16, and 18 gauge.



**Iron World Manufacturing, LLC**  
9390 Davis Avenue, Howard County, Maryland 20723  
Phone: 301-776-7448 | Toll Free: 866-310-2747 | Fax: 301-776-7677  
[ironworldfencing.com](http://ironworldfencing.com)

